

## PRODUCT DATA SHEET

Part Number	460409
EAN	4015609020355
Manufacturer	Walther-Werke
WEEE-Reg-Nr	DE 22131895

### 60A Female Receptacle 4P 250V 9h IP44


- High Impact Thermoplastic featuring high resistance and toughness creating an abrasion-resistant material
- Retaining Device
- Gasket
- Zinc electroplated Steel Screws
- Screwed terminal connection system
- Color Coded
- Finger-safe in accordance with BGV A3 soft transition radius from flange to collar
- Walther can produce and supply the mating cable assemblies.



### Ordering/Logistics Information

Order Unit	Piece
Net Weight	1.43 lbs or 0.645 kg
Packing Quantity (VPE)	5
Packaging Length	12.21 in or 0.31 m
Packaging Width	10.04 in or 0.255 m
Packaging Depth	5.90 in or 0.15 m
Gross Weight (VPE)	7.55 lbs or 3.421 kg

### Certification

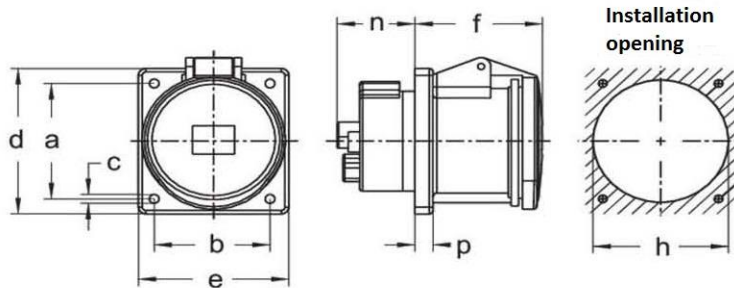
VDE/ENEC certification	40000707
UL certification	NO. E83342 
EAC certification	BY112.02.01.020 06089

### Classification system

Classification system	ETIM_6.0
ETIM Class	EC001317

## Technical Product Data

IEC-amperage	63A
Amperage acc. UL/CSA	60A
Number of poles and wires	4 = 3P + G
Voltage acc. EN 60309-2	250 V / (50-60HZ)
Clock hour position	9 h
Identification color	Blue
RAL-number	5002
Degree of protection (IP)	IP44
Connection system	Screwed terminal
Angle of receptacle	Straight
Material	Plastic
Flange size vertical	4.21 in 107 mm
Drill hole distance vertical	3.35 in or 85 mm
Flange size horizontal	3.94 in or 100 mm
Drill hole distance horizontal	3.03 in or 77 mm



Amp.	63		
Pole	3	4	5
a	85	85	85
b	77	77	77
c	6,5	6,5	6,5
d	107	107	107
e	100	100	100
f	85	85	85
h	90	90	90
n	52	52	52
p	12	12	12

All specifications are subject to change without notice. Consult a Walther Electric Engineer for the latest specifications or speak with a member of our Customer Care Team +1 (800) 925-8437.