

PRODUCT DATA SHEET – IEC60309

Part Number AJ169521SH

EAN
 Manufacturer Walther-Werke
 WEEE-Reg-Nr DE 22131895

**60A 5P 120/208V 9H IP67 IEC wall
 Receptacle with Mechanical
 interlocking switch with 3P MCCB**


- High Impact Thermoplastic featuring high resistance and toughness creating an abrasion-resistant material
- Lockout/tagout capability
- Color Coded by voltage
- Ground first to mate – last to break for added safety
- Finger-safe in accordance with BGV A3 soft transition radius from flange to collar
- Walther can custom design configurations that meet your application requirements.
- Walther can produce and supply the mating cable assemblies.



Ordering/Logistics Information

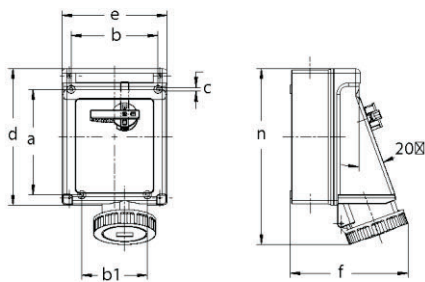
Order Unit	Piece
Net Weight	4.91 lbs. or 2.229 kg
Packing Quantity (VPE)	1
Packaging Length	15.35 in or 0.39 m
Packaging Width	7.87 in or 0.20 m
Packaging Depth	7.87 in or 0.20 m
Gross Weight (VPE)	5.34 lbs. or 2.42 kg

Certification

VDE/ENEC certification	40002935
UL certification	E196679 
And multiple international certifications	

Technical Product Data

IEC-amperage	63A
Amperage acc. UL/CSA	60 A
Number of poles and wires	3P + N + G
Voltage acc. EN 60309-2	120/208 V - (50-60HZ)
Clock hour position	9 h
Identification color	Blue
Degree of protection (IP)	IP67
Type of switch	Mechanical locking
Type of switch	3P MCCB
Material	Plastic



Drawing A

AMPS		Poles & Wires	UOM	DIMENSIONS									
N.A.	Int'l			a	b	b1	c	d	e	IP44 f	IP67 f	IP44 n	IP67 n
20	16	2P3W	inch mm	7.20 183	5.94 151	4.49 114	0.26 6.5	9.33 237	7.20 183	7.17 182	7.60 193	10.55 268	10.63 270
20	16	3P4W	inch mm	7.20 183	5.94 151	4.49 114	0.26 6.5	9.33 237	7.20 183	7.36 187	7.64 194	10.63 270	10.71 272
20	16	4P5W	inch mm	7.20 183	5.94 151	4.49 114	0.26 6.5	9.33 237	7.20 183	7.24 184	7.72 196	10.75 273	10.91 277
30	32	2P3W	inch mm	7.20 183	5.94 151	4.49 114	0.26 6.5	9.33 237	7.20 183	7.36 187	7.91 201	11.10 282	11.22 285
30	32	3P4w	inch mm	7.20 183	5.94 151	4.49 114	0.26 6.5	9.33 237	7.20 183	7.36 187	7.91 201	11.10 282	11.22 285
30	32	4P5W	inch mm	7.20 183	5.94 151	4.49 114	0.26 6.5	9.33 237	7.20 183	7.44 189	7.91 201	11.18 284	11.38 289
60	63	2P3W	inch mm	7.20 183	5.94 151	4.49 114	0.26 6.5	9.33 237	7.20 183	7.72 196	8.23 209	11.89 302	12.17 309
60	63	3P4w	inch mm	7.20 183	5.94 151	4.49 114	0.26 6.5	9.33 237	7.20 183	7.72 196	8.23 209	11.89 302	12.17 309
60	63	4P5W	inch mm	7.20 183	5.94 151	4.49 114	0.26 6.5	9.33 237	7.20 183	7.72 196	8.23 209	11.89 302	12.17 309

All specifications are subject to change without notice. Consult a Walther Electric Engineer for the latest specifications or speak with a member of our Customer Care Team +1 (800) 925-8437.